

# HAGI COURSE

## Petroleum Geology of Indonesia : Current Knowledge



Ramada Bintang Bali Hotel, Dec. 7 - 11 2009

### Course Overview

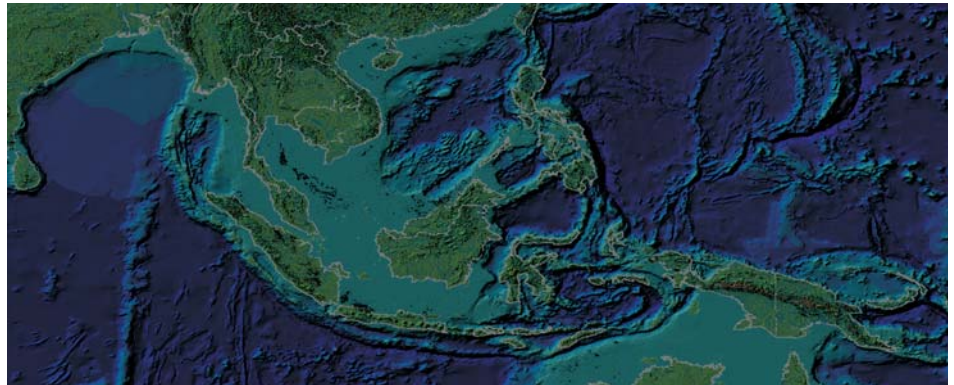
Geologically, Indonesia occupies one of the most complicated areas on Earth. The archipelago is made up of three major crustal plates and numerous micro-plates of both continental and oceanic origins. This tectonic setting provides Indonesia with more than 60 sedimentary basins and inter-basin areas in which petroleum accumulations are either proven or possible.

Petroleum resources of Indonesia has been explored and produced for more than 125 years. Yet, the Indonesia's oil and gas potential and production are still important regionally and globally. National and multi-national companies are still venturing this resource. The potential of unexplored resources is still large in both Western and Eastern Indonesia.

Indonesia may also be the most diverse country in the world with at least 50 proven and probably more than 100 speculative petroleum systems. Controlled largely by the different geological regimes of Western and Eastern Indonesia, the pattern of petroleum accumulations differs across the archipelago. Understanding the geological evolution and how the various sedimentary basins developed, are the keys to understanding the petroleum systems of the sedimentary basins.

Within this five-day course, current knowledge on petroleum geology of Indonesia will be presented and discussed. The course materials are based on recent concepts within individual basins. Detailed discussions will be made for producing basins. New ideas on the possibilities of petroleum accumulation in un-explored areas will be presented. Current progress of the petroleum exploration and production will be addressed.

The course will provide participants with tour of petroleum geology of Indonesia. After the course, the participants will know regional tectonics, stratigraphy, petroleum system, petroleum geology, and exploration-production status of individual basins in Indonesia. This knowledge is important, especially for new venture evaluation. Specific problems of an area where participants are working in can be shared and discussed in this course. The course will benefit both junior and senior petroleum professionals. Professionals from other disciplines who want to know the petroleum geology of Indonesia will also take benefit from the course.



### Course Outline

- Day 1 : Introduction, Regional Tectonics, Regional Stratigraphy, Sedimentary Basins of Indonesia, Western Indonesia.
- Day 2 : Sumatra, Java, Natuna.
- Day 3 : Kalimantan, Eastern Indonesia, Makassar Strait, Lesser Sunda, Sulawesi.
- Day 4 : Seram, Timor Arafuru Sea, Papua, Region Petroleum System
- Day 5 : Current Status of the Petroleum Exploration and Production, Future Challenges and Opportunity, Conclusions.

### Instructor



**Awang Harun Satyana** graduated (S1) from the Geology Department of the University of Padjadjaran, Bandung in 1989. He has been working for oil industry for 19 years. He started his career in 1990 as Exploration Geologist for PERTAMINA. This lasted 10 years until 2000 working in Kalimantan, Sulawesi, and Papua areas. From 2000 to 2002, he was assigned as Sr. Regional Geologist of PERTAMINA Directorate of Management of Production Sharing. In end of 2002, he joined BPMIGAS (Government of Indonesia's Executive Agency for Upstream Oil and

Gas Business) as Head of Geology for South Sumatra and Java Exploration until 2004, Head of Geology for Kalimantan and Eastern Indonesia Exploration from 2005 to 2009, and as Sr. Manager of Exploration Geology since March 2009.

Awang has actively serviced international and national geological societies by contributing papers, articles, keynote talks, lectures and courses. There have been totally 166 publications (61 papers for international and national conferences, 28 articles for journals, 6 chapters for books, 34 invited presentations and keynote talks, 23 guest lectures for universities and schools, and 14 course manuals for professionals). Some of his papers were given awards by the professional organizations. He was assigned in 2005 by the AAPG (American Association of Petroleum Geologists) as the Associate Editor of the AAPG Bulletin for period of 2006-2007. In 2008, "HAGI Award" was awarded to Awang by the HAGI as an appreciation for his great contribution and dedication to geosciences. Awang is an active member of IAGI (Indonesian Association of Geologists), IPA (Indonesian Petroleum Association), AAPG, HAGI (Indonesian Association of Geophysicists), and GSA (Geological Society of America).

### Information and Registration :

Please register as soon as possible to the HAGI Secretariat :

**Patra Office Tower, 20th Floor, Suite 2045**

Jl. Jendral Gatot Subroto Kav. 32-34 Jakarta Selatan

Tel. /Fax. +62 21 5250040

Email address : [secretariat@hagi.or.id](mailto:secretariat@hagi.or.id) or [tech.assistant@hagi.or.id](mailto:tech.assistant@hagi.or.id) or [andrie.gs@pertamina-ep.com](mailto:andrie.gs@pertamina-ep.com)

# HAGI COURSE

## Petroleum Geology of Indonesia : Current Knowledge



Ramada Bintang Bali Hotel, Dec. 7 - 11 2009

### COURSE REGISTRATION FORM

Course Title : **Petroleum Geology of Indonesia : Current Knowledge**

Date : 7 - 11 December 2009 (5 days course)

Instructor : Awang Harun Satyana\*  
\*Sr. Manager of Exploration Geology, BP MIGAS

Venue : Ramada Bintang Bali Hotel

Fee : USD 2,250 (Non HAGI Member)  
USD 2,150 (HAGI Member)  
(Including: hotel accommodation for 6 (six) nights, breakfast, coffee break & lunch, course material, Course kit, certificate, and photos.)

Attendee Name : .....

I am HAGI member, No.....  I am not HAGI member

Company : .....

Phone/ Facsimile : .....

Email Address : .....

Mobile Phone no : .....

Contact Person : .....

Period of Stay : .....

Flight detail : .....

Payment Method :

- Cash Addressed to HAGI Secretariat
- Transfer Addressed to BNI Bank Cab. Menteng - Jakarta
  - USD : 0010740158
  - Rp. : 0010740147

Cancellation will be accepted until 12.00 hrs on November 30, 2009.

For late cancellation will be charged 50% from the course fee

Please return this form together with payment to the :

#### HAGI SECRETARIAT

Patra Office Tower 20th Floor Suite 2045

Jl. Gatot Subroto Kav. 32 - 34 Jakarta

Phone/ Fax : 021 - 525 - 0040

Email Address : [secretariat@hagi.or.id](mailto:secretariat@hagi.or.id)

[tech.assistant@hagi.or.id](mailto:tech.assistant@hagi.or.id)